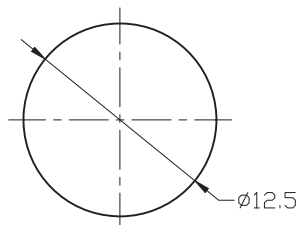
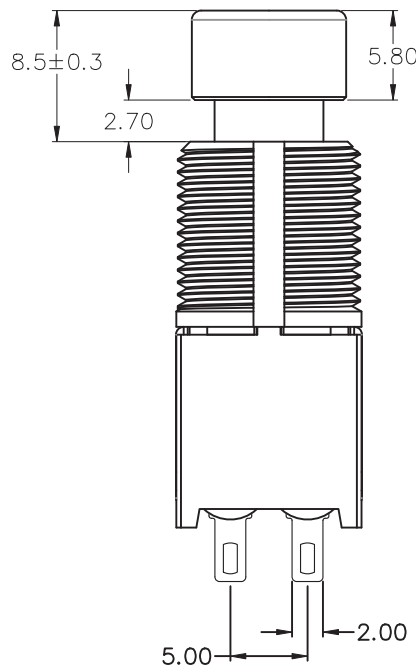


SWITCH FUNCTION		Term. Comm.
ON	(ON)	2-1,5-4 ON 2-3,5-6 (ON)

( )=MOMENTARY



PANEL MOUNTING



SPECIFICATIONS

RATING: DC9V,1A

CONTACT RESISTANCE:100mΩ MAX.

INSULATION RESISTANCE:DC 500V 100MΩ MIN.

DIELECTRIC STRENGTH:1,000V RMS @SEA LEVEL.

OPERATING FORCE : 2.5± 1 Kgf

OPERATING TEMP : -10°C ~ +70°C

MECHANICAL LIFE:20,000 CYCLES

RoHS & Lead Free

福哥興業股份有限公司 FAVOR UNION CO., LTD.

台灣新北市新莊區大安路20號

NO. 20 TA AN RD. HSIN CHUANG  
NEW TAIPEI CITY TAIWAN R. O. C

TEL 886-2-2202-8766

FAX 886-2-2204-3500

比例 SCALE	
單位 DIMENSION mm	
DO NOT SCALE DRAWING TOLERANCES UNLESS OTHERWISE	
UP TO 10	±0.3
ABOVE 10 TO 100	±0.5
ABOVE 100	±0.8
ANGULAR DIMENSIONS	5 °

品名TITLE		PUSHBUTTON SWITCH SERIES			
型號MODEL		FSK14-2-2-101-2F006			
繪圖 DRAWN	傅皓群	核准 APPROVED	黃威翔		
版次 REVISION		A	日期 DATE	2020/03/22	