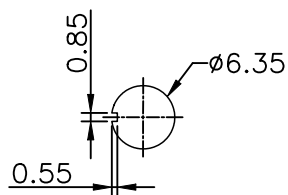


P.C.MOUNTING



PANEL MOUNTING

SPECIFICATIONS

MECHANICAL LIFE: 40,000 make-and-break cycles.

CONTACT RESISTANCE: 10 mΩ max. initial @ 2-4VDC

100mA for both silver and gold plated contacts.

INSULATION RESISTANCE: 1,000 MΩ min.

DIELECTRIC STRENGTH: 1,000 Vrms min.@sea level.

OPERATING TEMPERATURE: -30°C to 85°C.

SWITCH FUNCTION			
Model No.	POS.1	POS.2	POS.3
ON/OFF	ON	NONE	ON
Term. Comm.	2-3,5-6	N/A	2-1,5-4
SCHMATIC			

福哥興業股份有限公司 FAVOR UNION CO., LTD.

台灣新北市新莊區大安路20號

NO. 20 TA AN RD. HSIN CHUANG
NEW TAIPEI CITY TAIWAN R. O. C

TEL 886-2-2202-8766

FAX 886-2-2204-3500

比例 SCALE	
單位 DIMENSION mm	
DO NOT SCALE DRAWING TOLERANCES UNLESS OTHERWISE	
UP TO 10	±0.3
ABOVE 10 TO 100	±0.5
ABOVE 100	±0.8
ANGULAR DIMENSIONS	5 °

品名TITLE	TOGGLE SWITCH SERIES		
型號MODEL	FSY13-2-2-202-DE		
繪圖 DRAWN	許麒弘	核准 APPROVED	黃威翔
	版次 REVISION	A	日期 DATE
			2019/8/16